

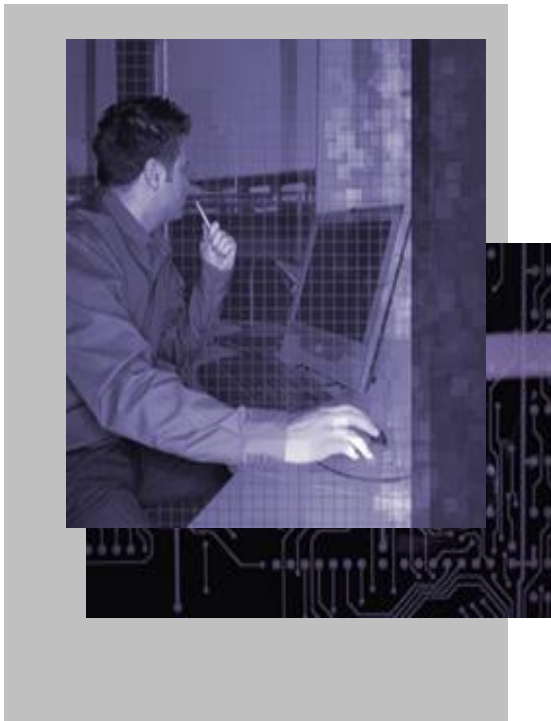


## What is Grid Computing?

---

Grid computing uses the resources of many separate computers connected by a network (usually the internet) to solve large-scale computation problems. It is a form of distributed computing that involves coordinating and sharing computing, application, data, storage, or network resources across dynamic and geographically dispersed organizations. Grid technologies promise to change the way organizations tackle complex computational problems. However, the vision of large scale resource sharing is not yet a reality in many areas. Grid computing is an evolving area of computing, where standards and technology are still being developed to enable this new paradigm.

Organizations that depend on access to computational power to advance their business objectives often sacrifice or scale back new projects, design ideas, or innovations due to sheer lack of computational bandwidth.



### Why Grid Computing?

---

**Low Cost:** Grid computing will allow many different and remote idle processors to be harnessed, while maintaining very high standards of security for both, the host and the client.

**Faster Results:** When it comes to Grid Computing, the more, the faster, the better. It utilizes as many processors as available to run simultaneously and process different pieces of the project. At the end of the allocated time, the processed data is put together like a jigsaw puzzle. The project is complete as soon as all the different pieces are put together. In short, the processing time is inversely proportional to the number of processors used.

**Grid computing is an inexpensive way to increase your computational power since it runs on machines already in use in your organization**

## Gridalogy

---

**Gridalogy** provides software and services to increase the productivity and efficiency of individuals, large and small companies through the power of Grid Computing. A grid could be as simple as a network of two personal computers or as powerful as a room full of servers. The company's goal is to bring the power and speed of grid computing from the academic fields to the homes and industries by providing software, support, network design, application development, and training to allow everyone to harness the technology.

**Gridalogy** provides a complete, off the shelf, software package with the ability to easily configure and monitor a simple Computer Grid made of two or more personal computers, servers, etc. This technology enables telecommuters, small business and corporate users to process the information in a faster, reliable, seamless and an economical manner.

For medium and large corporations, **Gridalogy** provides custom network, middleware and application design services for task-specific use with the grid network. Custom training can also be arranged for at the customer's request. The simple program interface will allow users to setup, configure, monitor, manage accounting, and schedule jobs. All our software and services are compatible with all computing platforms (Windows, Macintosh, Unix, Linux and others).

### Strategic Benefits

---

**Gridalogy** will offer value-added grid computing services at nominal prices to small and medium businesses. It will provide measurable financial returns by:

- ❑ **Higher Collaboration**
- ❑ **Increased Productivity**
- ❑ **Cost-efficient Storage**
- ❑ **Efficient Use of Resources**



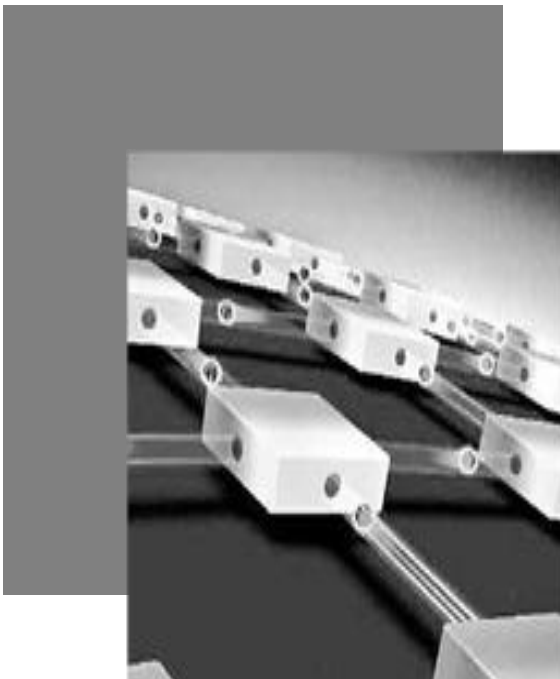
## Nebula 1.0

---

**Nebula 1.0** is our signature product. It is the core and user level middleware and the application layer that is highly customizable through a simple and configurable GUI. The software is platform independent – it works on Windows, Linux, Macintosh, UNIX, FreeBSD, etc.

Nebula 1.0 is easy to configure, design, and monitor a simple Computer Grid made of two or more PCs. This technology enables small business users and telecommuters to process their information quickly, reliably and seamlessly. With our off-the-shelf product, users are now able to configure their two or more PC network into a powerful grid in minutes with computational power comparable to that of clusters and supercomputers.

**Gridalogy** will connect all dots in Grid Computing together. We provide common interface for all aspects of the customer grid.



### Higher Collaboration

---

- Bringing together resources in a dynamic and geographically distributed fashion
- Use resources to provide a powerful tool for today's enterprise

### Increased Productivity

---

- Productivity jumps due to increased computational activity
- Conserves resources in a cost-effective approach as power is drawn from downtime

## Customer Expectations are changing:

- Technology Reliability, Availability and Redundancy are 'Must-Haves'
- 'Know Our Business' Is the New Price of Entry
- 'Give us a Single Point of Accountability'
- Embody Responsiveness and Ownership
- Make Your Services Enhance Our Business

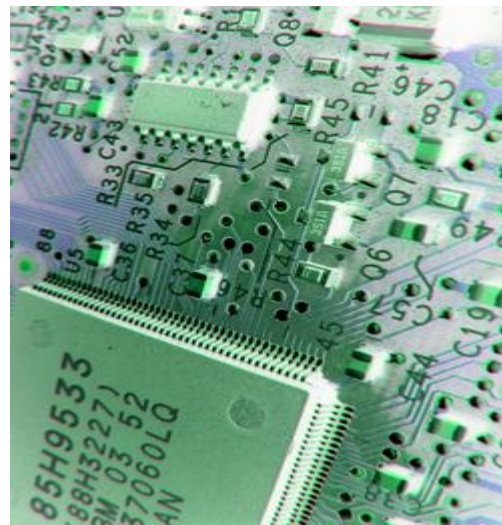
**Gridalogy** strives to engage in creating opportunities that bring together competent minds and consulting services to solve customer challenges, thereby enabling them to leverage the existing network resources to reap high returns. It will invest in people, technology and assets with commitment to its customers and communities within which it operates.

Effective decision-making requires answers to a number of focused questions. As small and medium businesses ready themselves to tackle new challenges and initiatives, **Gridalogy** will provide significantly improved networking power with an excellent ROI.

## Cost-efficient Storage

- Prior to grid technology, enterprises overbought storage
- Efficient use of modular storage; balanced workloads, and capacity on demand
- Effective sharing of investments in storage with other enterprises

Grids are powered by under utilized resources. PCs not in use during evenings, weekends, and daytime hours can provide significant computational resources



## Our goals are S.M.A.R.T :

### Specific

- Well defined
- Objectives, resources and deadlines are nailed down

### Measurable

- Project is segmented into manageable chunks and measurable milestones
- Deviations from deadlines are reasoned and addressed on priority

### Agreed Upon

- Client responsibilities and our deliverables are clearly defined
- Practices that facilitate high visibility and open channels of communication
- Committed to achieve agreed upon deliverables within agreed upon timeframes

### Realistic

- Achievable timelines
- Necessary and appropriate resources are planned and obtained

### Time-Framed

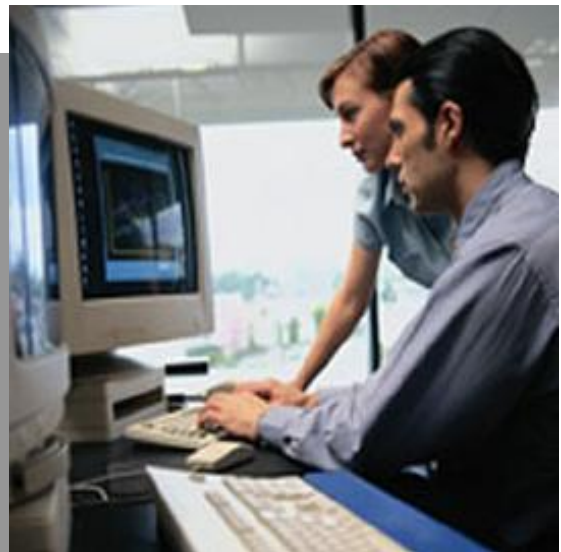
- Appropriate action plans to detect, isolate, track and resolve problems
- Methodologies to monitor project progress and our commitments levels

## Keys to success

**Gridalogy** will combine business acumen with technical expertise to provide a reliable, high-quality alternative to dedicated in-house resources for typical network optimization activities.

Client will benefit from our high levels of:

- Experience
- Know-how
- Product Expertise
- Lifecycle Support Services



## Maintenance Services

---

### Software Support:

- **Software Media Replacement.** Gridalogy will replace all defective software media at no additional charge. Gridalogy will replace only the number of copies originally provided to the customer.
- **On-line Access to Product Updates/ Software Patches.** Gridalogy will provide authorized access to remotely downloadable, customer-installable Product Updates and Software patches to Customers.
- **Proactive Upgrades to Major/Minor Releases.** For Gridalogy Software applications, customer will be entitled to receive software minor and major releases. The upgrades that will be provided may include new software features and functionality. Customer will not, however, be entitled to optional features and functionality that the customer did not previously license and/or which Gridalogy licenses as separate products.
- **8x5 Remote Technical Support.** Gridalogy support team will troubleshoot and resolve product related problems via telephone or remote dial-in connection. Gridalogy system engineers will diagnose and analyze the system malfunction, if applicable, or remotely access the system to verify the existence of the problem and the conditions under which it exists or recurs. If the team identifies that the fault cannot be resolved remotely, and Gridalogy determines on-site intervention is required, the customer would provide the needed local hands-on support to co-ordinate and assist in resolution of the problem.
- **Self-Maintenance Support Solutions.** Gridalogy will provide online product documentation – general usability or software application-specific answers. General usability issues would be defined as, but not limited to, non-programming issues, and includes general information around the functionality of the product.

## Planning & Design Services

---

Gridalogy's **plan-based project execution will** help customers leverage data networks to unlock value and enhance business performance through end-to-end accountability for delivering expert project management services throughout project life-cycle.

**Solution Design & Development Services.** Our highly qualified **Solution Architects** with proven expertise in processes and technology design a fully integrated solution that interoperates seamlessly with customer's specific network requirements.

**Project Management Services.** Our Project Management services will offer a single point of accountability to design, build and implement customer's multi-vendor data networks by ensuring fast, systematic and accurate execution through efficient management and co-ordination of resources.



### Service elements you need

---

- Programming Requirements Specification Plan
- System Design Specification Plan
- Implementation Plan
- System Testing and Acceptance Plan

**Gridalogy's Project Management services offer a single point of accountability to design, build and implement your multi-vendor data networks**



## Implementation & Integration Services

---

With today's increasingly **integrated** approach to network infrastructure and technology, adding network capacity or implementing new applications that seamlessly inter-operate can be a real challenge. With our implementation and integration services, **Gridalogy** offers a team of experienced technical experts with proven industry experience, who are poised to assist you in effectively **engineering, integrating, testing and validating** the most optimal solutions for your business.

**Infrastructure Readiness Analysis.** A comprehensive customer Network Readiness Analysis provides specific information, such as network topology, requirements for power, environment controls, and connectivity, to get the site/network ready for installation of the **Gridalogy** technology platforms and software applications.

**Solution Deployment Services.** Our expert technical team will manage all phases of solution deployment-equipment configuration, software loading, and network integration.

**Ongoing Support Services.** The **Project Manager** will help coordinate and assist with a range of on-going services during the different phases of project implementation- solution engineering, project planning, system auditing, system user training and a host of other support activities, which are crucial to a successful system implementation.

**Vendor Co-ordination Services.** The **Project Manager** will co-ordinate to identify appropriate resources to assist with activities or customer requests vis-à-vis network vendors and third-party contractors to ensure smooth, timely and quality deployment of our grid solution.



### our projects

---

- ❑ Meet Customer Requirements
- ❑ Are on time
- ❑ Are under budget

## Implementation & Integration Services

---

**User Acceptance & Performance Testing Services.** The Acceptance & Performance Testing Services will verify for optimal system installation and proper functioning of all adjunct network components – logins, connectivity, control networks, system synchronization, software translations, hardware vintages, et al. so as to provide superior grid utilization and performance.

**Network Analysis & Optimization Services.** The Network Analysis & Optimization will perform problem diagnosis and provide functional requirements for the network to implement Gridalogy's grid computing solution.

**Training and Education Services.** Our technical professionals offer training/post-installation workshops to network administrators and end-users such that the customer benefits optimally from the features and functionality of the new solution. The project manager will additionally provide extensive project documentation for system components, architecture, configuration and hardware.

### We provide

---

- End-to-end accountability for delivering expert project management services throughout project life-cycle.
- Management and co-ordination of resources necessary for successful implementation
- Quality implementation of your specific network requirements within your budget

Gridalogy has made the investment in tools, infrastructure and service skill sets to manage the throughput of our data network in a holistic manner



## Business Consulting Services

---

**Grid Computing Consulting.** We will customize our services to fit your needs. Gridalogy provides services that compliment our core product. Gridalogy will provide consulting services in all areas related to Grid Computing - from understanding your business process pain points to concepting your organization's grid infrastructure network to installation, full system deployment and custom application and middleware. Our experts have experience with all current grid solutions like Globus Toolkit, Condor Project, etc. You specify the project details and we will implement it for you. Protect your infrastructure investment. Contact us to find out how we can help you with your Grid Solutions.

**Customer Network Analysis/LAN/WAN Consulting.** Gridalogy also provides custom services to analyze your current networking infrastructure (LAN/WAN) to determine if it is "Grid Ready". We will also help you improve your network to get the most of your hardware and software investments.

**Processing Power 'for Hire'.** Gridalogy's setup of networked servers running Gridalogy 1.0 have been setup to provide computational power to organizations. The service can crunch data for CAD Designs, Animations, DNA Sequence Decoding, High Energy Simulations, Data Mining, Astro Physics, and many more application at a very nominal price per processor-hour.



### Highlights

---

- ❑ **Pre-Installation Workshop**
- ❑ **Detailed Solution Engineering, Network Design Documents**
- ❑ **Implementation Quality Audit**
- ❑ **Quality Assurance Plan during Installation and Commissioning**
- ❑ **Regular Milestone Review Meetings**